



Adapt Hand Wash Stations



They come with clean and dirty water tanks and are easy to fill and clean.

A foot pump allows for simple, hygienic water flow activation.

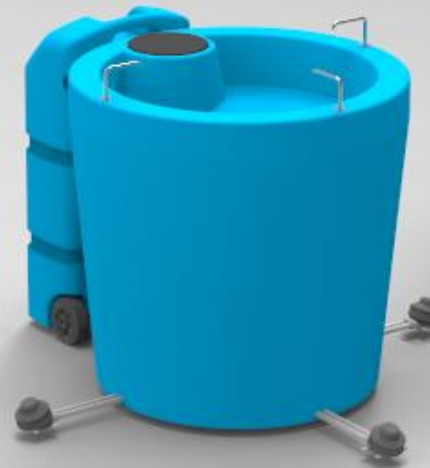
LB076SA
20L Wash Basin Tank with
Jerry Can



PA236SA
40L Wash Basin Tank



PA351SA
300L 3 Station Stand
Alone Wash Basin



PA225A
90L Stand Alone
Wash Basin



LB076SA

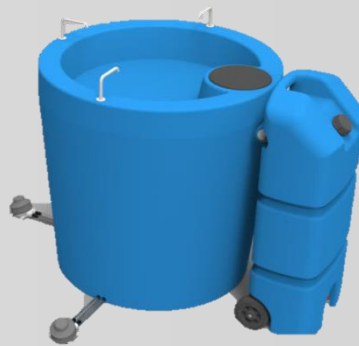
20L Wash basin tank with clean and dirty water tank



[See price list](#)

PA351SA

300l 3 Station stand alone wash basin with 60l removable water caddy



[See price list](#)

PA236SA

40l Wash basin tank with removable tank



[See price list](#)

PA225A Standard

180l Stand alone wash basin with 90l clean and 90l dirty water tank



[See price list](#)

1. Temporary/ permanent feature.
2. Water efficient cleaning point.
3. Increases onsite cleanliness.
4. Does not require traditional plumbing.
5. Dirty water can be recycled to water plants etc.
6. Helps aid in the "4 STEP" fight against spreading of diseases (eg: Covid 19).
 - (i) Social distancing
 - (ii) Wear a mask
 - (iii) **"Wash Your Hands Regularly"**
 - (iv) Sanitize

Areas of use:

Store entrance.
Staff entrance.
Additional sites around a warehouse/
factory / building site.

PA225A Caddy & Watering can

180l Stand alone wash basin with 90l clean and 90l dirty water tank



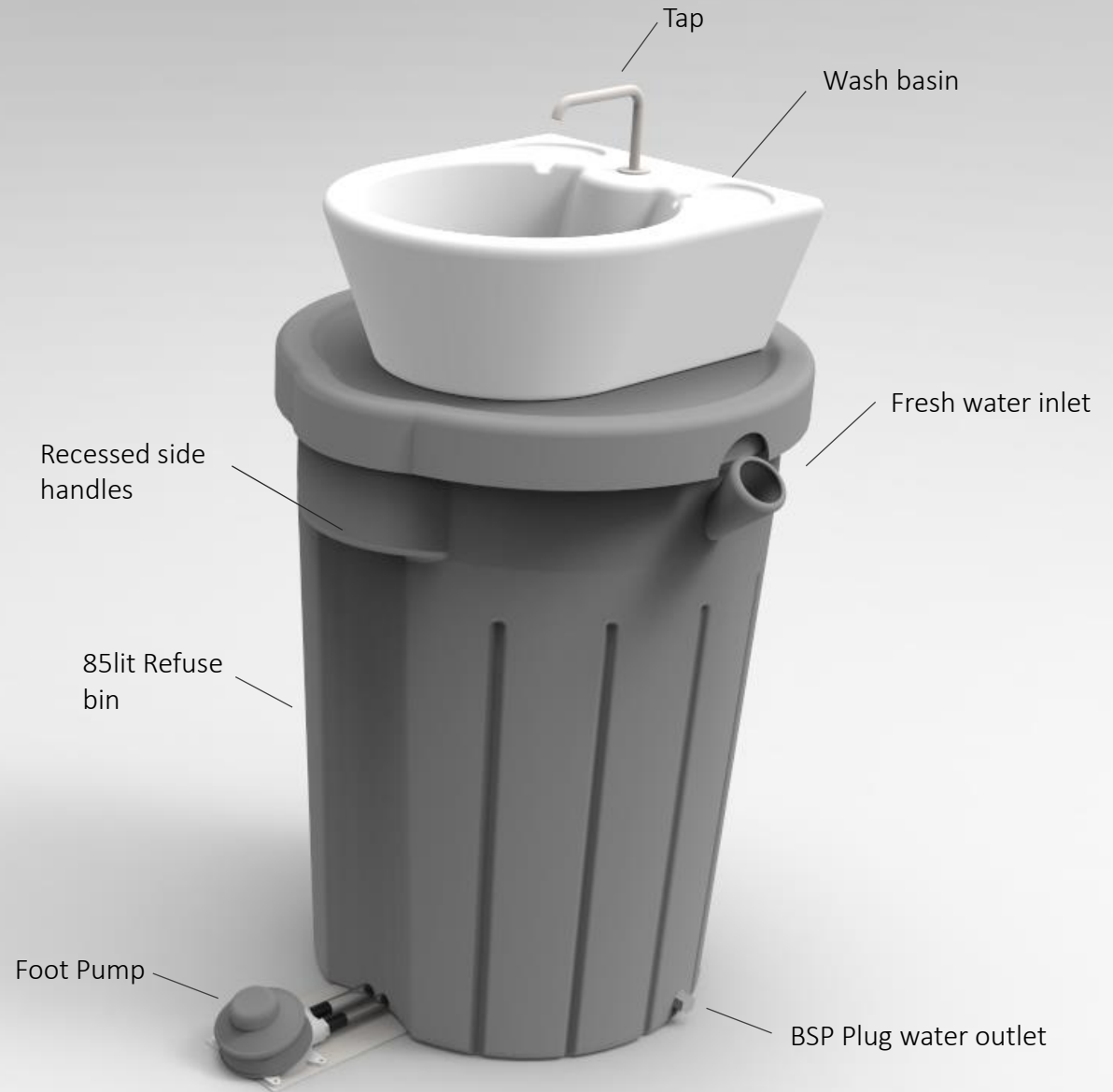
[See price list](#)



LB076SA 20L Wash Basin Tank with Jerry Can



- *Hands free foot pump*
- *Fresh and dirty water tank*
- *Removable jerry can (fresh water)*



LB076SA 20L Wash Basin Tank with Jerry Can

Compress the foot pump
to wet your hands



Apply soap to your hands



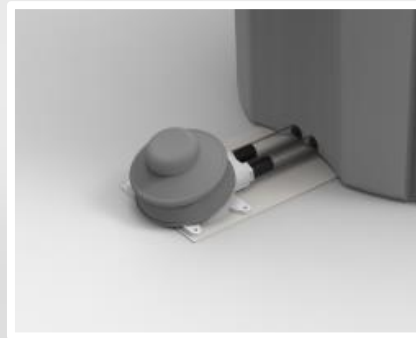
Wash your hands for 20
seconds



Compress the foot pump
to use water to remove
the soap from your hands



Hand wash basin with
water spout



Foot Pump

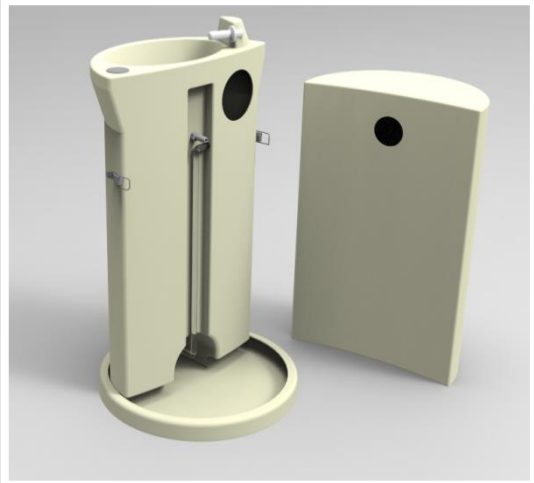




PA236SA 40L Wash Basin Tank



- *Hands Free Foot Pump*
- *Fresh Water Tank*
- *Removable Grey Water Tank*
- *Stabilizing Base Plate*



PA236SA 40L Wash Basin Tank

Compress the foot pump
to wet your hands



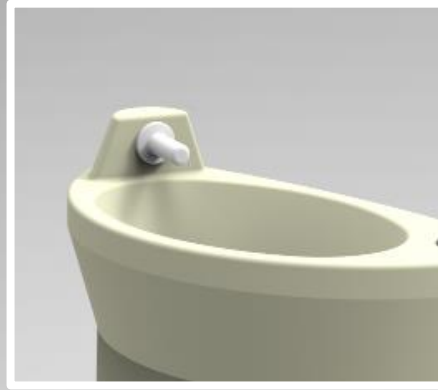
Apply soap to your hands



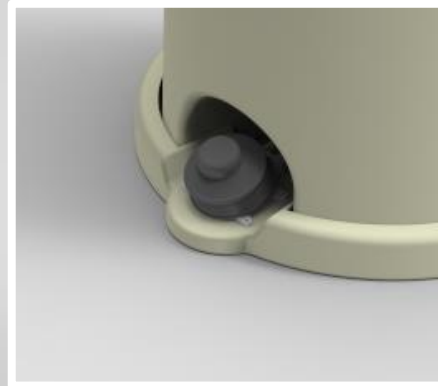
Wash your hands for 20
seconds



Compress the foot pump
to use water to remove
the soap from your hands



Hand wash basin with
water tap



Foot Pump

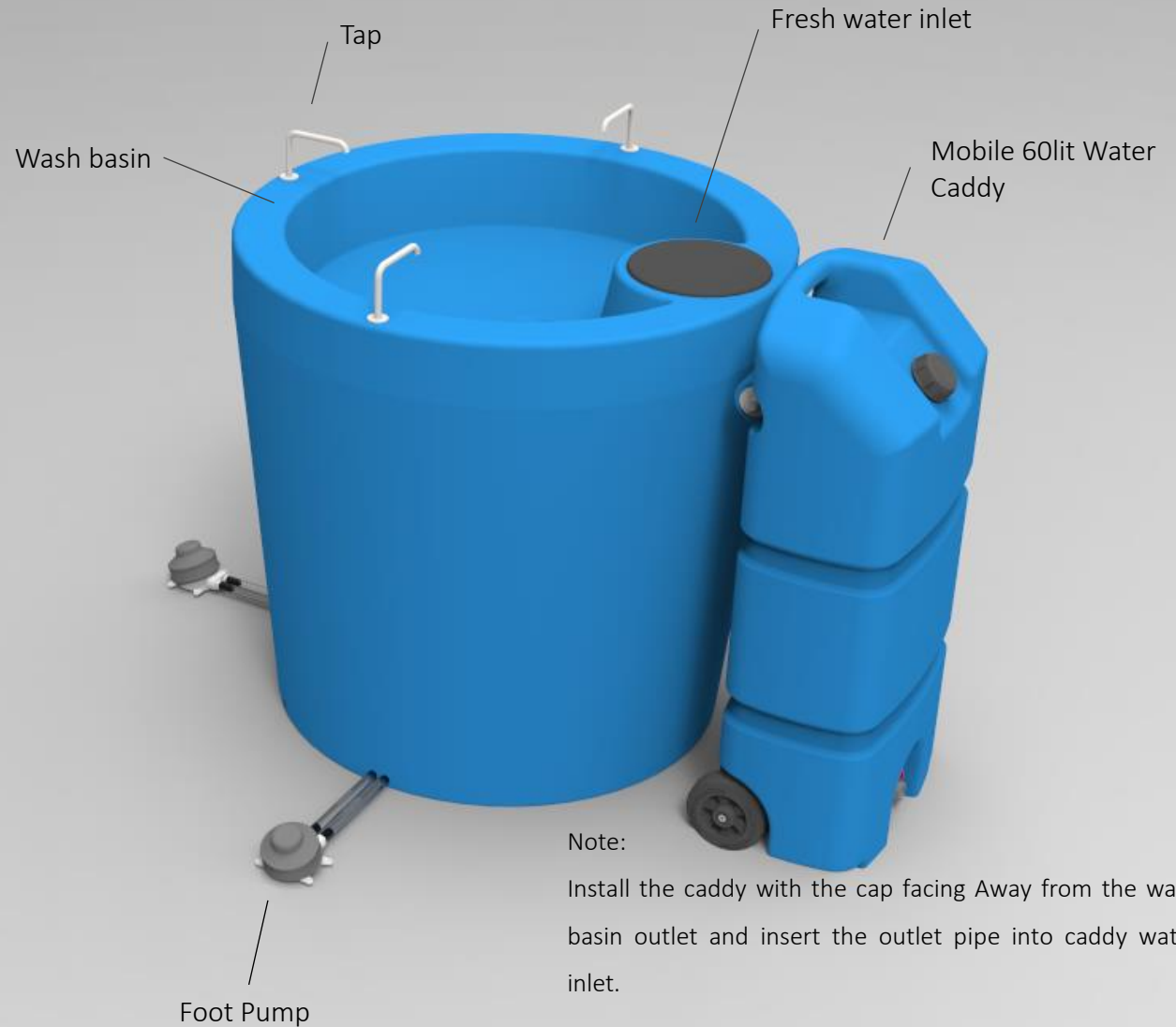




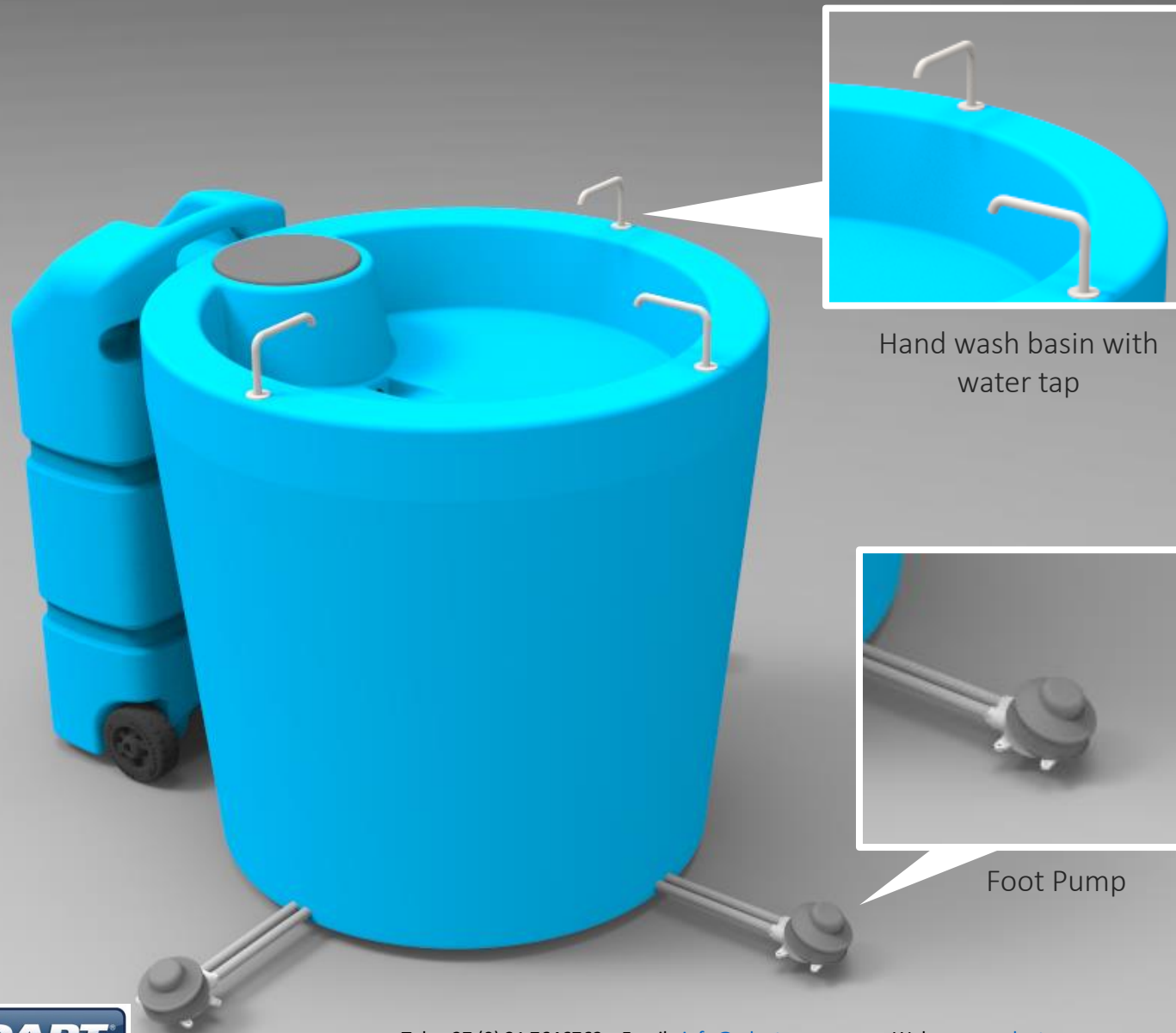
PA351SA 300L 3 Station Stand Alone Wash Basin

- *Hands Free Foot Pump*
- *Fresh Water Tank*
- *Removable Grey Water Tank*
- *Stabilizing Base Plate*

To refill the wash basin remove the plastic cap and pour water into the inlet.



PA351SA 300L 3 Station Stand Alone Wash Basin



Hand wash basin with water tap

Foot Pump

Compress the foot pump to wet your hands



Apply soap to your hands



Wash your hands for 20 seconds

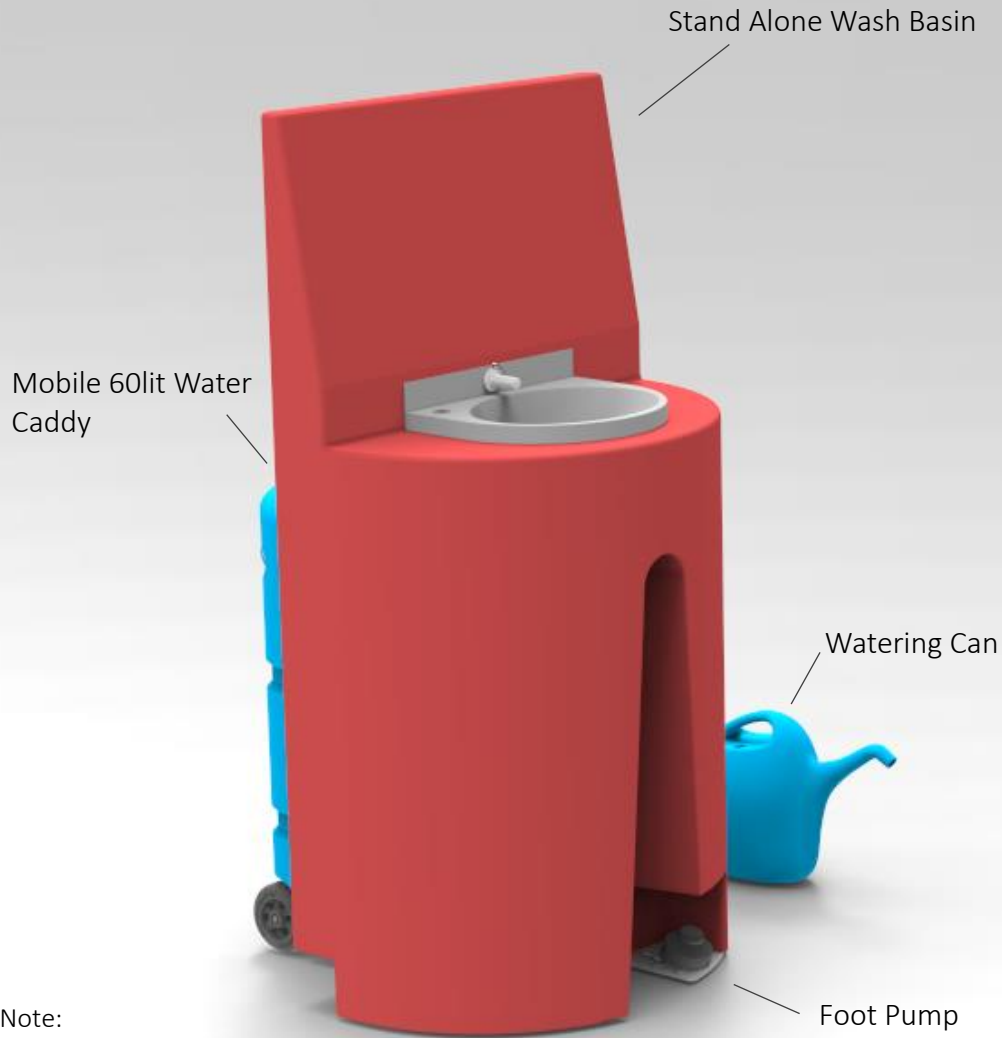


Compress the foot pump to use water to remove the soap from your hands

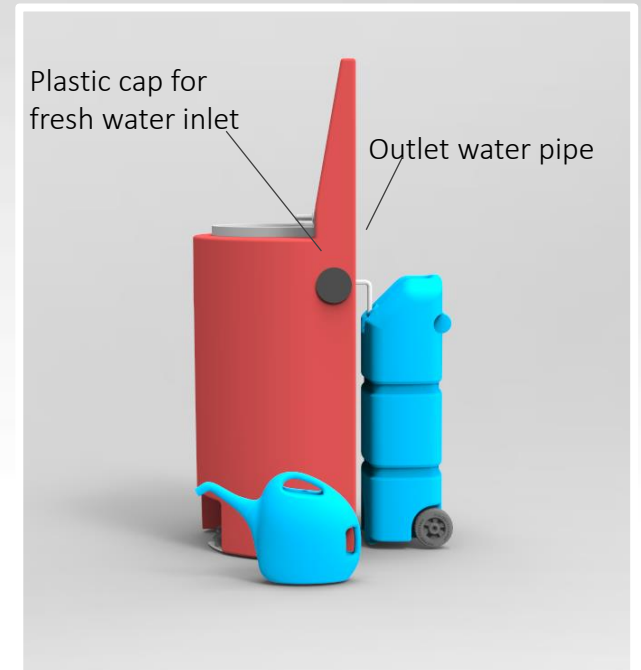
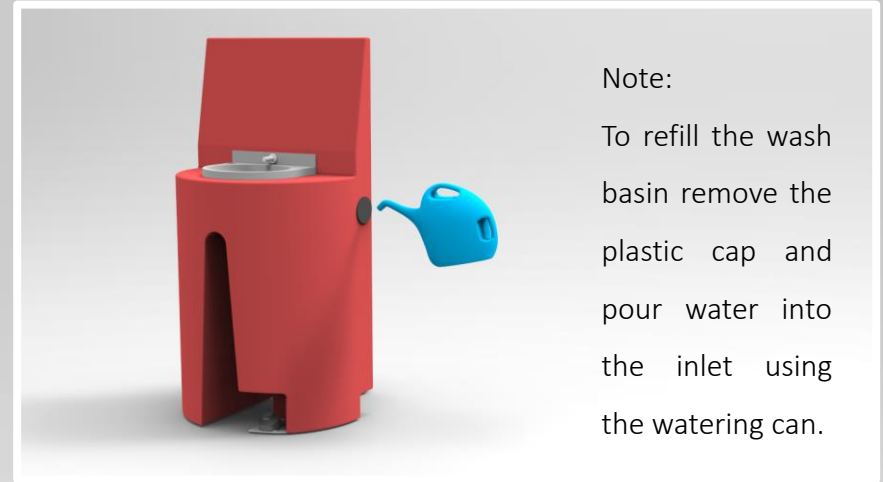
PLEASE WASH YOUR HANDS



PA225A Wash basin

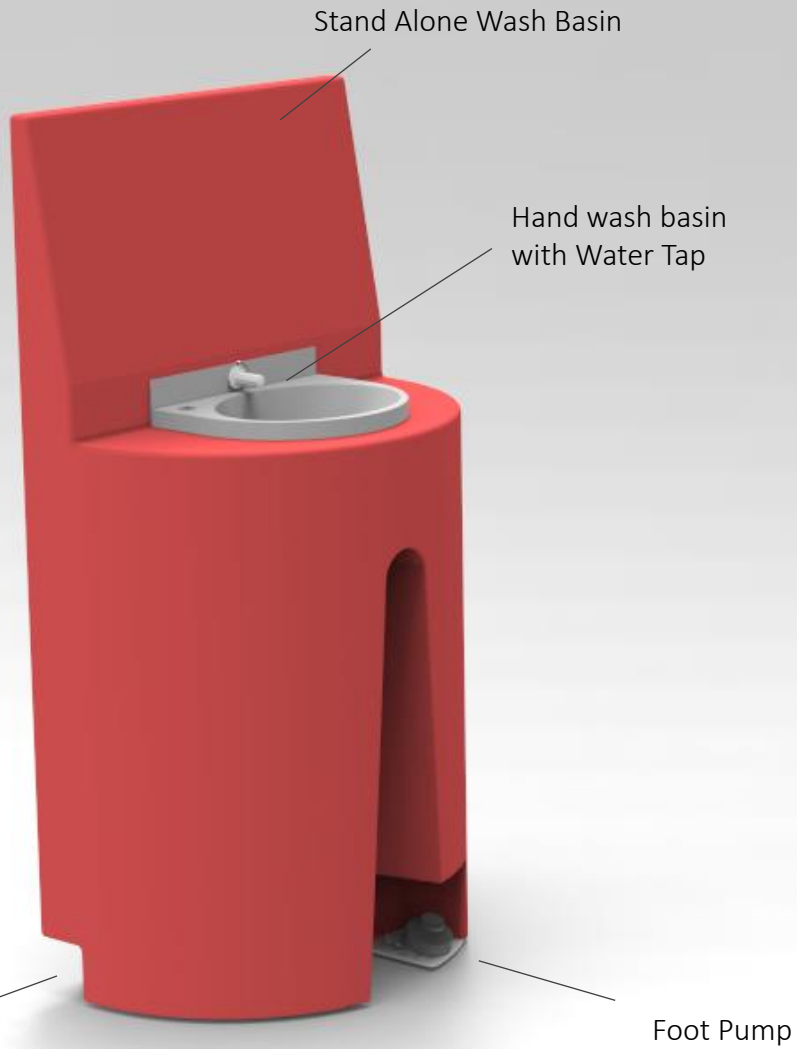


Note:
Install the caddy with the cap facing the wash basin outlet and insert the outlet pipe into caddy screwcap inlet. Ensure not to lose the screwcap.





PA225A Standard Wash basin



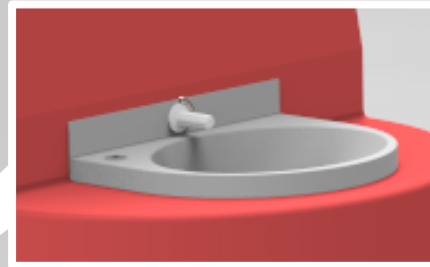
Water outlet located in recess on side of the Wash basin



Note:
To refill the wash basin remove the plastic cap and pour water into the inlet.



PA22A Standard Wash Basin



Hand wash basin with water tap



Foot Pump

Compress the foot pump to wet your hands



Apply soap to your hands



Wash your hands for 20 seconds



Compress the foot pump to use water to remove the soap from your hands

PLEASE WASH YOUR HANDS